

# Keweenaw Land Trust

## Directions to the KLT's Paavola Wetlands Nature Area

From Hancock:

1. Head north on US-41, following signs for Calumet.
2. About 1 mile past the Quincy Mine Hoist, turn Right onto Paavola Road.
3. Make the first Left onto Mesnard Location Road and follow it around the curve to become the No. 9 Road.
4. The west trailhead is located 0.6 miles down No. 9 Road and 1/4 mile before the main parking area.
5. The main trailhead will be on your left near the end of the road.

The west trail head has parking for 2 cars. The main trailhead has an accessible, a vault toilet and a half circle parking lot that can accommodate several cars or buses. Neither trailhead is plowed in winter. You may park along No. 9 Road and snowshoe.

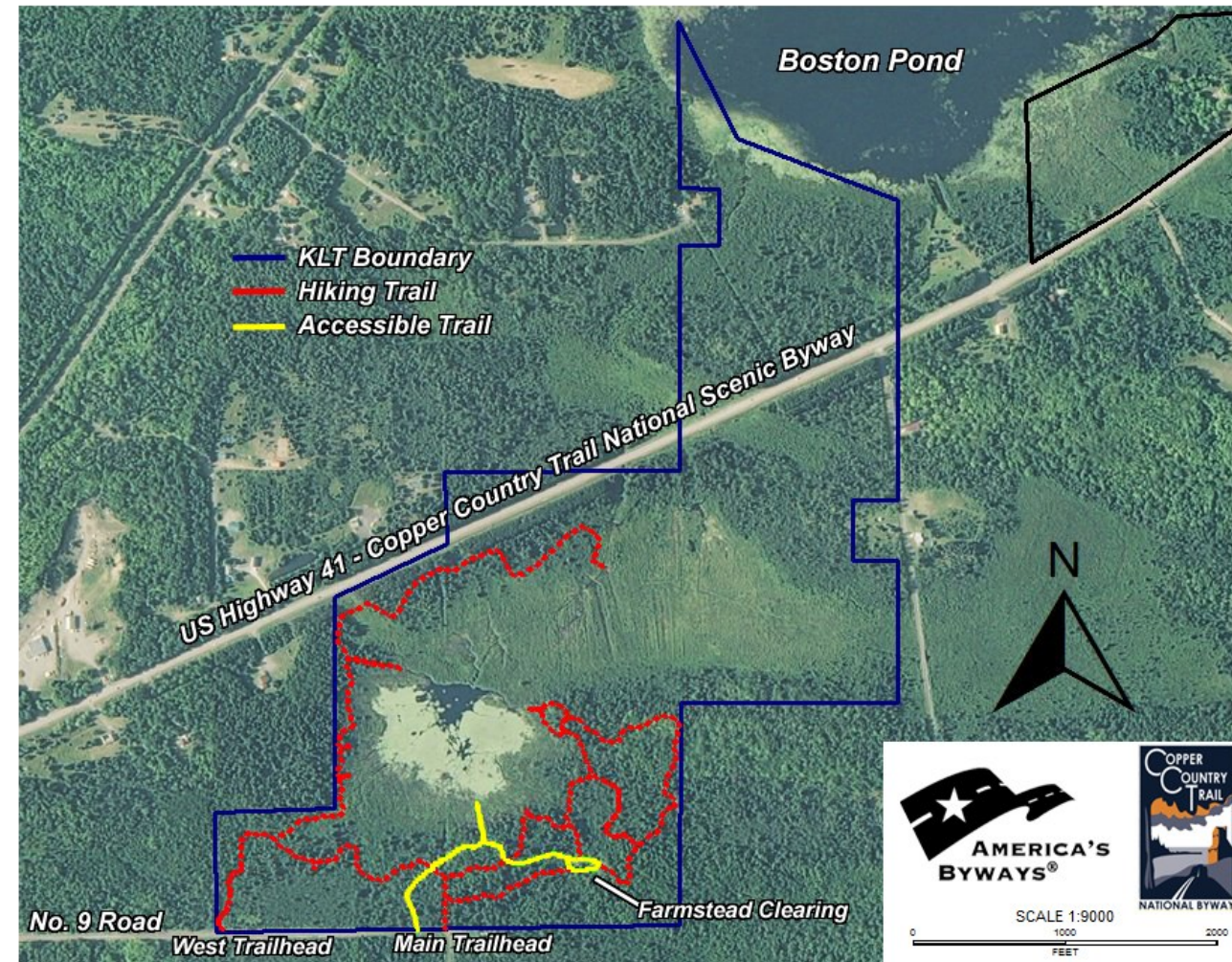


Please support the Keweenaw Land Trust  
protect special places in  
the Copper Country!  
Call us at (906) 482-0820  
or visit:  
[www.KeweenawLandTrust.org](http://www.KeweenawLandTrust.org)



[www.KeweenawLandTrust.org](http://www.KeweenawLandTrust.org)

## Paavola Wetlands Nature Area Trail Map



**Note:** The Paavola Wetlands Nature Area is outlined in blue. Accessible trail and boardwalk are shown in yellow. General hiking paths are marked in red. The black boundary is part of KLT's Boston Pond Nature Area. Paavola Wetlands is open year-round for low-impact enjoyment. All trails on KLT land are suitable for non-motorized traffic only! The accessible trails begin at the main trailhead, where a pit toilet is available. An alternate west trailhead also can be found along No. 9 Road. Hiking trails may be muddy or waterlogged during the spring and after heavy rains. Please do not stray off the trail to avoid muddy areas! Remember, boots dry but widened trails take years to recover. We encourage you to brush off your footwear before hiking at Paavola Wetlands to avoid introducing invasive species. There are no marked trails north of US-41 where hunting is allowed by permit only. Contact the KLT office for more details.

# Land once farmed, now shaped by beavers...

The Paavola Wetlands Nature Area has attracted humans and wildlife for generations, and today is one of the Keweenaw Land Trust's most visited projects. Prior to becoming a public hiking spot, the small farming community of Paavola took off in the early 1900s as Finnish immigrants moved to the region to work in the Copper Country's mines. Constructed around the turn of the 20th century, the farmstead at Paavola Wetlands was originally home to the Karjala-Noponen family. Like their neighbors in "Three Corner Town," the family grew a variety of vegetables, had a healthy apple orchard, and small dairy barn to help support their subsistence lifestyle.

At first glance, little remains of the farmstead at Paavola beyond the house and a few foundations. However, to a keen observer there is much to see as you explore the landscape. Rock walls piled high by generations of farmers sprawl across the forests. *Suo-ojat*, or "swamp ditches," were once used to drain the wetlands for farming but today lie hidden in the undergrowth, you can see them on the arial map.



After the farm was abandoned, beavers were quick to reclaim the landscape. The industrious creatures took advantage of the rock walls to reinforce their extensive dams, creating a 12-acre pond and several lodges. The forest has erased nearly all traces of the fields, and diverse species of birds, mammals, reptiles, insects plants and amphibians now call this place home.

The 2018 Father's Day flood broke the abandoned damn but within 2 years beaver came back to repurpose the abandoned lodges and perform a quick fix of the damn. In natural succession, regrowth of the vegetation they rely on for food and building materials has already started in the now wet meadow.

Originally established in 1999 with a land donation from the neighboring Copper Country Masons, KLT has expanded the nature area several times to its current size of 215 acres. Miles of trails are open to the public year-round for hiking, snowshoeing, and other low-impact pursuits. With help from the National Scenic Byway program, a handicap accessible path and floating boardwalk allow visitors of all ages and abilities to enjoy the sights, sounds, and smells of the wetland ecosystem.



## Please respect the environment and others during your visit!

The trails at Paavola Wetlands are kept up by a dedicated group of volunteers and the KLT staff. We ask you to please follow these simple Leave No Trace ethics to ensure the land is left better than you found it for others to appreciate and enjoy. You can take pride in helping us keep this place special!

- Pack out your trash. Pick up any you see along the trail. DO NOT throw trash in the toilet!
- Respect plants and wildlife
- Leave what you find for others (except berries)
- Manage your pets while on the trails - please clean up after your dogs!
- Protect private property and stay on KLT lands during your visit
- Travel on durable surfaces and existing trails
- Do not enter the Paavola farmhouse
- Be considerate of other visitors. Please do not litter or damage the trails.