

## Directions to the Pilgrim Community Forest

From Houghton/Hancock:

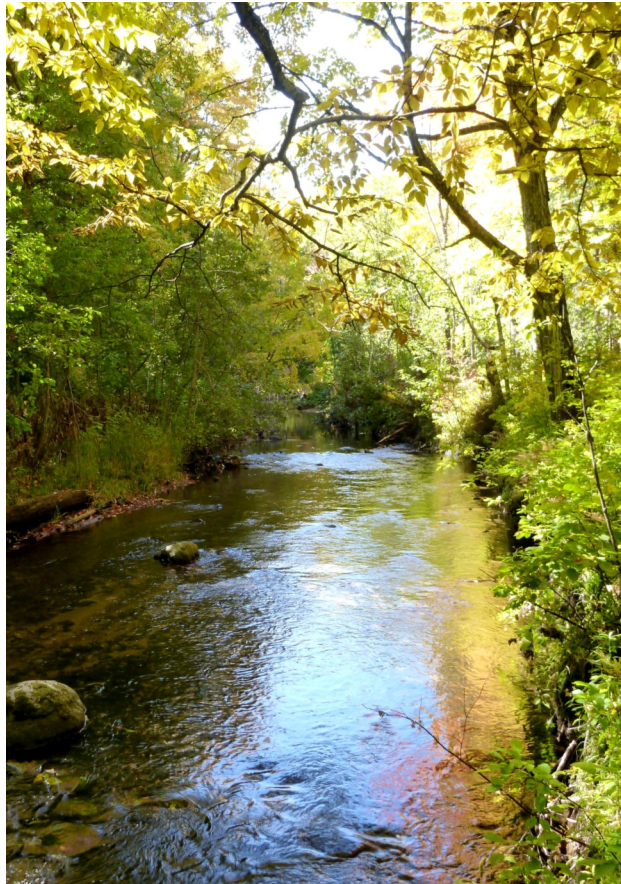
1. Head south on Bridge Street up the hill
2. At the 4-way flashing light, continue straight through Hurontown
3. After 0.5 miles, turn left onto Paradise Road
4. In 1.6 miles, Paradise and Pilgrim Roads meet. The trailhead is on the western side of Paradise Road just behind the guardrail.

There is no official parking area, please park on the shoulder. Be aware of passing traffic on this steep, curvy road! We advise you park on the shoulder of Pilgrim Road, which has fewer passing vehicles. All roads in this area are plowed year-round; however, you must park on Pilgrim Road in winter for your safety. There is a small sign indicating where the trail begins near the guardrail.

---

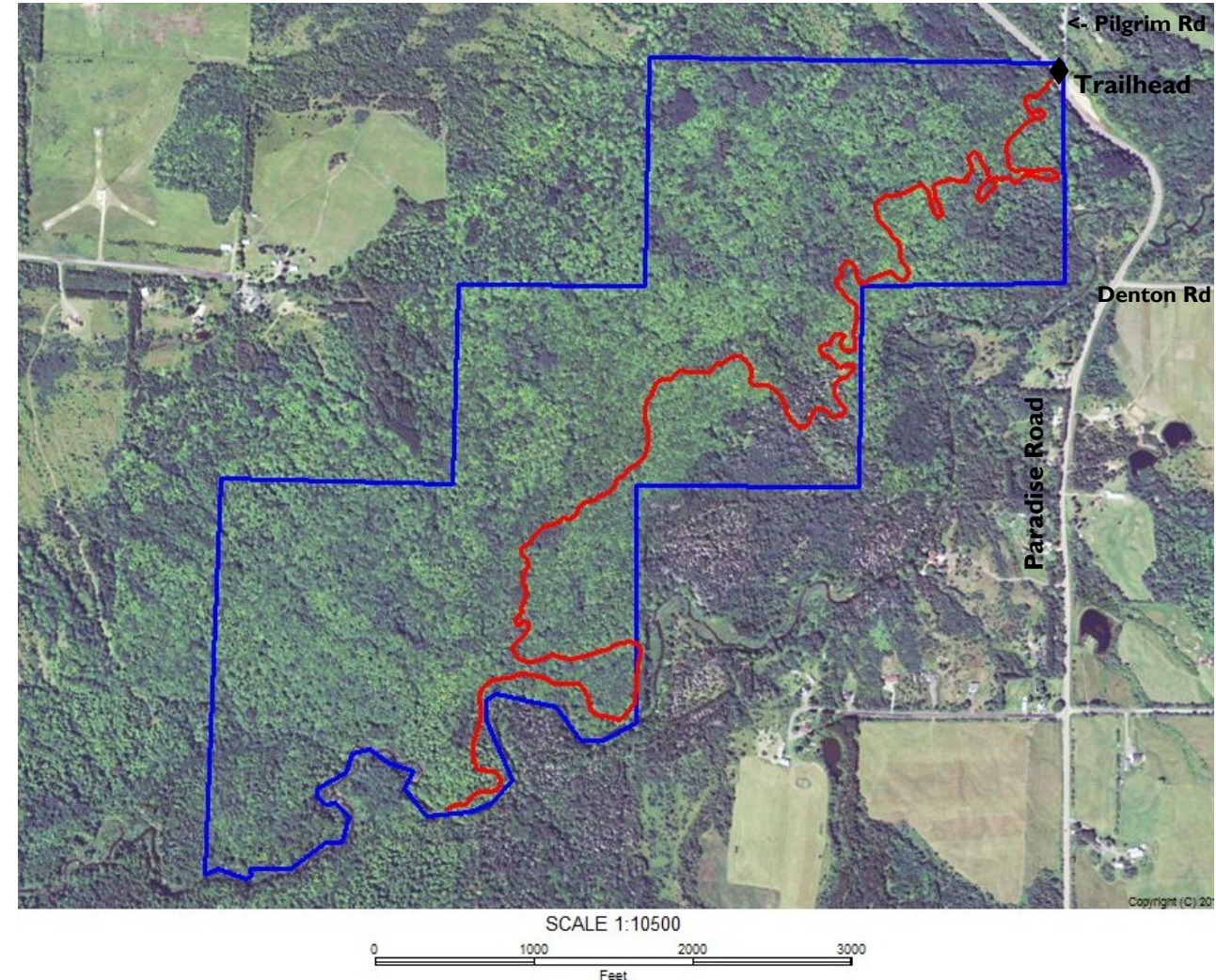
Please help support the Keweenaw Land Trust as we work to protect special places in the Copper Country! Learn more by calling (906) 482-0820 or by visiting [www.KeweenawLandTrust.org](http://www.KeweenawLandTrust.org)

## Keweenaw Land Trust Pilgrim Community Forest



[www.KeweenawLandTrust.org](http://www.KeweenawLandTrust.org)

## Pilgrim Community Forest Trail Map



**Note:** The boundary of the KLT's Pilgrim Community Forest is outlined above in BLUE. The single-track trail is marked in RED. No motorized vehicles are permitted on the Pilgrim Community Forest. The property is open to the public for free year-round for low-impact recreational pursuits. Hikers and mountain bikers are both welcome on the trail, please respect other users! Dogs are allowed; however, we ask that you clean up after your pet and keep them under control and within sight during your visit. Hunting is permitted under the Michigan Commercial Forest Act during applicable seasons, though baiting, motorized access, and hunting blinds are not allowed. Fishing the Pilgrim River is encouraged. The river can be paddled during high water but is done at your own risk. Overnight camping and fires are prohibited.



### **Please respect the environment and others during your visit!**

The trails at the Pilgrim Community Forest are kept up by a dedicated group of community volunteers and KLT staff. We ask you to please follow these simple Leave No Trace ethics to ensure the land is left in the same or better condition than you found it for others to enjoy.

- Pack out your trash and please pick up any you see along the trail or river.
- Respect plants and wildlife
- Leave what you find for others
- Manage your pets while on the trails - please clean up after your dogs!
- Obey all State fishing and hunting regulations
- Respect private property and stay on KLT lands during your visit
- Travel on durable surfaces and existing trails
- No motorized vehicles!
- Be considerate of other visitors. Please do not litter or damage the trails.
- Paddle on the Pilgrim River at your own risk.

## *Recreation, education, and sustainable forestry*

A project many years in the making, the Pilgrim Community Forest was purchased by the Keweenaw Land Trust in 2014. The 276-acre public nature area is step one to protect nearly 1,400 acres of land in the Pilgrim River Watershed, one of only a few largely untouched river systems in the Copper Country. Thanks to the dedication and a shared long term vision of key partner organizations, our community can enjoy this serene forest and beautiful river in perpetuity.

The Pilgrim River Watershed Project began in 2006, when the Copper Country Chapter of Trout Unlimited, KLT, and area landowners began exploring options to protect the Pilgrim



River corridor. The partnership grew to include Copper Country Audubon, Houghton Keweenaw Conservation District, Keweenaw Trail Alliance, Keweenaw Community Forest Company, Michigan Technological University Center for Water and Society, and Partners in Forestry. The Hovel family purchased critical lands in 2009 to keep hope alive for a successful conservation outcome while project partners secured funding. Grass-roots fundraising from across the upper Midwest and beyond flowed in. Grants from the U.S. Forest Service's Community Forest Program and match funding from the J.A. Woollam established the Pilgrim Community Forest.

The Pilgrim Community Forest is open to the public year-round for low-impact, non-motorized recreation. The Pilgrim River is a popular cold water trout stream frequented by anglers of all ages and abilities. A 3-mile trail leads visitors up scenic vistas, over seasonal tributaries, and through a mature northern hardwood forest. Hikers, mountain bikers, cross-country skiers, and snowshoers all share the trail. Hunters can utilize the property in accordance with the Michigan Commercial Forest Program.

In addition to addressing our community's need for more recreational areas, the Pilgrim Community Forest can support our local economy by allowing for sustainable timber harvesting. Though the land will remain undeveloped, selective harvesting can demonstrate forestry techniques and benefit the regional timber industry. Work continues to accomplish permanent protection of the remaining 1,000+ acres within the project area. The Hovel family believed in leading by example and the partnership continues their passion for land conservation and sustainable forestry by ensuring this special place serves both public recreation and education alike. You are invited to explore the Pilgrim Community Forest and help make it a community asset we can all enjoy.